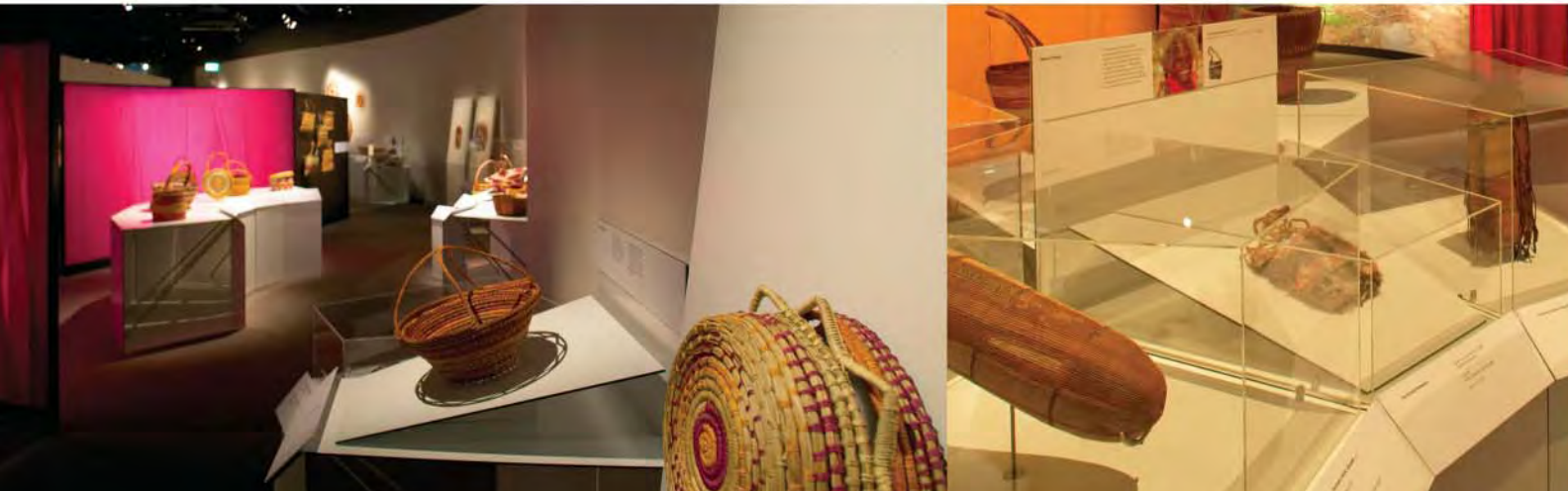




Twined Together: Kunmadji Njalehnjaleken demountable plinths lean to's and story panels & below Artist Julieanne Bangalang with her lace stitch bag



Twined Together Touring Exhibition

3 yr Nationally Touring Museum Exhibiton >> Launched Museum Victoria >> Completed 2006 (Pre Adapt id work by Saffron Samuels)